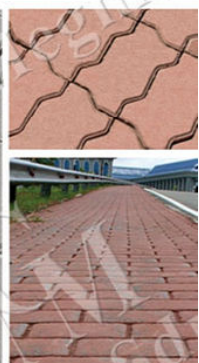




میگماجو سنڊیرین برحد
美佳砖瓦制品有限公司
Megmaju Sdn Bhd

ISO 9001
BUREAU VERITAS
Certification



CEMENT BRICK & INTERLOCKING PAVER BLOCK

Cement Bricks

Whether you are designing and building the largest institutional project or adding a small accent to your home, Megmaju Sdn Bhd has the ability and the expertise to assure you to have perfect cement bricks for your project or home. Our cement bricks are built to last and their toughness endures for generations. We can guarantee that you will be happy with our products and that we will deliver them to your construction site. All our Cement Bricks produce excellent results. It takes about seven days to mix and mould a Cement Brick with the right hydraulic pressure and compacting vibration. The Cement Bricks will never stop curing so that it is constantly increasing in strength.

Ideal For

- Residential Housing
- Retaining Wall
- Small DIY Jobs

Sustainability

- High Compressive Strength
- More Economic in terms of cost
- Highly Durable
- Low Maintenance
- Allowed to paint on cement bricks
- Less Mortar is required.

CEMENT



Increase compressive strength.

SAND



Increased density of cement brick. To prevent fall apart easily

CHIPPING STONE



Work well together with cement to make the bricks even more tougher.

CEMENT BRICKS



SPECIFICATION

Photo	Product Code	Description	Size (mm)	Weight (kg)	Quantity/Pallet (pieces)
	BR1-N	Cement Brick (Natural colour) *Only available in natural colour)	225 x 95, thickness=65	2.9	800

Cement Bricks Installation

Here are the instructions on how to lay our cement bricks. Take some time to read it thoroughly. It will help you obtain a neater and very satisfying result. There are four simple steps to lay our Cement Bricks:

1. Common concrete cement pole.
2. Sprinkle water on the bricks that are already laid and those ready to be laid, and begin laying.
3. On completing laying the bricks, apply plaster from top to bottom of the wall of bricks.
4. Paint over the plastered wall.

INSTRUCTIONS



Made of Steel Reinforce Rods- Four Steel Wire Rod (size depends on plan) form to square type (length as per plan) for every one feet at pole side attached (tying) Brick Wire Mesh at the Steel Rod, for trying use Galvanized GI Wire. After settled all the Brick Wire Mesh up to the end line of the pole (each side of the pole covered with any used wood) then pour the mixed concrete.

After the pole dry up – Start lay the brick at the bottom, pour mixed concrete cement > 4mm, lay the bricks thus placing one brick at the right angles to another and at in between each bricks pour > 5mm mixed concrete cement, this automatically continue to finish off till the end of the wall. To keep the end of the wall in line vertically and horizontally some or at random, bricks may be broken into half, quarter or any size to keep the wall line no big space in between bricks install.



Bricks already install should sprinkle or pour water from top to bottom to separate and make it water-proof. Usually pour water for consecutive three days before plastering.



The right way to apply plaster is to apply a thin coat of mortar (1:3) on the inner wall and followed by a thin coat (1:4) of mortar on the outer wall while waiting for the first inner coat to dry. Repeat by alternating between the inner and outer wall until the desired thickness of plaster is achieved. The thickness of the plaster should cover up the wire mesh.

The surfaces of each layer of plaster, except the last one, should be rough to ensure good bonding between each layer.



Allow one week for the smooth outer layer to cure before painting the wall to the desired colour. The reason why a week curing is necessary is to make sure that all the plastered walls are free from hairline or large cracks in the plaster before proceeding on the final touch which is painting.

Interlocking Paver Blocks

No matter if you are looking for unique pavements for projects or simply need some final touch on flooring, Megmaju's Interlocking Paver Blocks (IPB) is a great choice for residential and commercial use. We are able to assist you to upgrade or enhance the elegance of your completed existing flooring by offering a variety of patterns and colours of paver blocks. Megmaju's IPB is truly a great investment as they reduce the need of maintenance and can be removed easily compared with other exterior floor finishing.

Ideal For

- Medium Duty
- Car Park
- Garage Floor
- Driveways
- Pathways
- Sideways
- Heavy Duty
- Public Roads
- Industrial Floors
- Loading docks
- Container Yards
- Ports

Sustainability

- Cost effective
- High durability
- Easy replacement (not bonded by cement)
- Excellent surface texture
- Easy to install (very few tools needed)
- Many choice of patterns and colours

HOMOGENEOUS

CEMENT

PIGMENT

SAND

STONE DUST

END PRODUCT



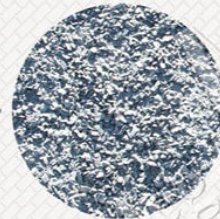
+



+



+



=



TWO LAYER

CEMENT

SAND

STONE DUST

SAND

PIGMENT

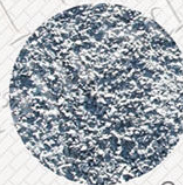
END PRODUCT



+



+



Combined with



Second Layer

+



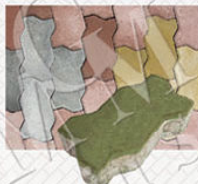
=



TYPES



"D"



"U"



"Y"



"I"



"Shell"



"Penguin"

COLOURS

Natural

Homogeneous Only

Green

Black

Red

Yellow

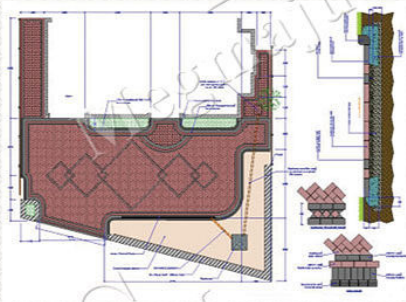
Blue

Two Layer Only

Paver Blocks Specification Data

TYPE	Product Code	Description	Size (mm)	Weight (kg)	Quantity/pallet(pcs)	Quantity/m²(pcs)
D	DHR	Homogeneous Red	230 x 140 t = 60	2.9	650	38
	DHBK	Homogeneous Black				
	DHY	Homogeneous Yellow				
	DHG	Homogeneous Green				
	DN	Homogeneous Natural				
	D2R	Two Layer Red	230 x 140 t = 65	3.3		
	D2BK	Two Layer Black				
	D2Y	Two Layer Yellow				
	D2G	Two Layer Green				
	D2N	Two Layer Natural				
U	UHR	Homogeneous Red	225 x 115 t = 55	3.0	650	39
	UHBK	Homogeneous Black				
	UHY	Homogeneous Yellow				
	UHG	Homogeneous Green				
	UN	Homogeneous Natural				
	U2R	Two Layer Red	225 x 115 t = 60	3.5		
	U2BK	Two Layer Black				
	U2Y	Two Layer Yellow				
	U2G	Two Layer Green				
	U2N	Two Layer Natural				
Y	YHR	Homogeneous Red	185 x 181 t = 55	2.5	637	47
	YHBK	Homogeneous Black				
	YHY	Homogeneous Yellow				
	YHG	Homogeneous Green				
	YN	Homogeneous Natural				
	Y2R	Two Layer Red	185 x 181 t = 60	3.0		
	Y2BK	Two Layer Black				
	Y2Y	Two Layer Yellow				
	Y2G	Two Layer Green				
	Y2N	Two Layer Natural				
I	IHR	Homogeneous Red	190 x 90 t = 50	2.0	660	50
	IHBK	Homogeneous Black				
	IHY	Homogeneous Yellow				
	IHG	Homogeneous Green				
	IN	Homogeneous Natural				
	I2R	Two Layer Red	190 x 90 t = 55	2.5		
	I2BK	Two Layer Black				
	I2Y	Two Layer Yellow				
	I2G	Two Layer Green				
	I2N	Two Layer Natural				
P	PHR	Homogeneous Red	240 x 120 t = 55	3.5	546	33
	PHBK	Homogeneous Black				
	PHY	Homogeneous Yellow				
	PHG	Homogeneous Green				
	PN	Homogeneous Natural				
	P2R	Two Layer Red	240 x 120 t = 60	3.8		
	P2BK	Two Layer Black				
	P2Y	Two Layer Yellow				
	P2G	Two Layer Green				
	P2N	Two Layer Natural				
S	SHR	Homogeneous Red	195 x 180 t = 55	2.0	624	37
	SHBK	Homogeneous Black				
	SHY	Homogeneous Yellow				
	SHG	Homogeneous Green				
	SN	Homogeneous Natural				
	S2R	Two Layer Red	195 x 180 t = 60	2.5		
	S2BK	Two Layer Black				
	S2Y	Two Layer Yellow				
	S2G	Two Layer Green				
	S2N	Two Layer Natural				

Paver Block Installation



1. Preparation/Planning

Plan & prepare construction by deciding the pattern and direction of the pattern.



2. Excavation

Dig as required & dispose excess soil.



3. Sub-base

Spread the sub-base to have flat even surface. Compaction is recommended.



4. Edge courses & kerbs

Lay at the kerb side first, then pave inwards.



5. Laying Course

Screed the laying course to have a level surface



6. Block laying

Lay the blocks in the desired pattern.



7. Alignment and compliance

Use a string line to get the diagonal looking straight.



8. Cutting in the edges

Mark the blocks before cutting.



9. Jointing and compaction

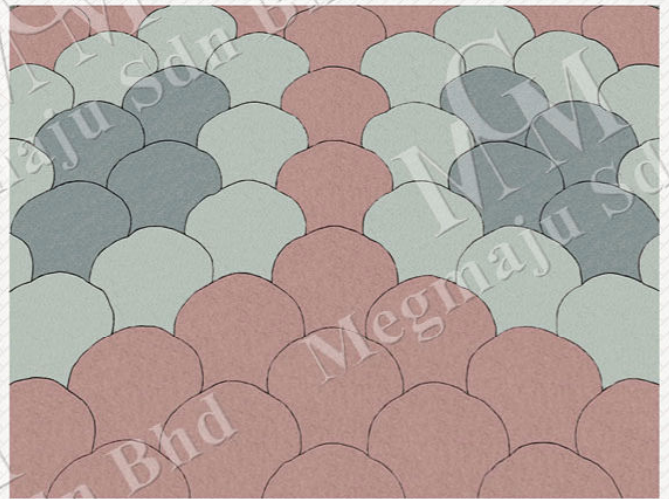
Spread jointing sand over the blocks & use a brush to spread the sand into the joints.



10. Completion

Sweep off excess jointing sand.

Reference Sites





For more information about Megmaju Sdn Bhd's product

Call us at +673 277 3514

Email sales@megmaju.biz

View our website at www.megmaju.biz

Drop by to our factory or distributor at:

MEGMAJU SDN BHD
Lot 70, Jalan Serasa
Industrial Estate, BT 1129,
Negara Brunei Darussalam.

